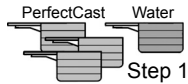


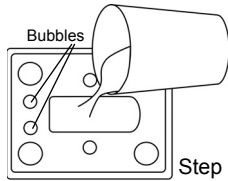
Included: PerfectCast, measuring scoop, mold trays, gloss, paint pot, paintbrush, axle mounts, decals and wheels to make 2 vehicles.

Needed: Disposable mixing cup, spoon or mixing stick, paper clip or toothpick and paper towel.



Step 1

Step 1: Pour 3 scoops of PerfectCast into a disposable container. Stir the mixture with a spoon or mixing stick until there are no lumps (about 2 minutes). If mixture is too thin, add a pinch of PerfectCast until mixture is like melted ice cream. Tap the container on the table several times to remove air bubbles.



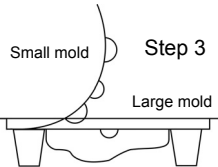
Step 2

Step 2: Pour mixture into the large mold (vehicle) until it brims over the surface. Tap mold a few times to release air bubbles.

Step 3: Place the small mold (wheels), matching the bubbles on one end, into the indentations of the large mold. Bend the small mold beginning with the bubbles and slowly push it into the large mold. Be careful not to trap air in the mold. Place a small glass or something of similar weight on the top of the mold to keep it flat. Let the cast dry for 1 hour. If a spoon is used for mixing, wash it immediately before PerfectCast hardens.

WARNING: Do not pour excess PerfectCast into the drain or toilet bowl. Dispose of excess material in the garbage.

Step 4: Remove the small mold from the vehicle by slowly peeling it back. Turn the large mold upsidedown and gently tap on the top until the vehicle falls out.

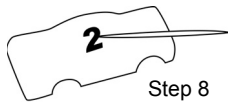


Step 3

Step 5: Sand the seamline from the vehicle and the wheel wells until smooth. Place the axles in the grooves on the bottom of the vehicle to make sure there is enough space to allow the wheels to turn. **Do not insert axle mounts.** If there is not enough room, sand the wheel wells until the wheels can move freely. **Remove wheels for painting.**

Step 6: **To complete the vehicle in one afternoon:** wait at least 1 hour, rub the model vigorously with paper towel until shiny, and then paint a smooth coat of varnish on all surfaces. Let varnish dry until it is not tacky, about 30 - 60 minutes.

Step 7: **For the best looking vehicle:** let the vehicle dry for about 24 hours. **Do not apply varnish.** Rub all surfaces of the model vigorously with paper towel until shiny. Wrapping the cast in paper towels and/or placing it in the sun can speed up drying time. Do not use microwave or oven.

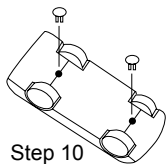


Step 8

Step 8: Before applying the decals, warm them by rubbing between your hands. Remove decals from paper and place on vehicle. Use a toothpick or paperclip to remove small decals from paper and place them on the vehicle. Using a toothpick or paperclip allows for more precise positioning of the decals. Models with large decals should be put on in this order: 1) grill, 2) top, 3) side panels, 4) side windows, 5) rear panel. Once the decal is placed on the vehicle, do not remove.

Step 9: Touch-up the blue areas of the vehicle's roof with the paintbrush and blue paint.

Step 10: Place a set of wheels in each groove on the model bottom. Making sure they are centered, push the axle mounts over the axles and into the holes between the wheels. To permanently attach wheels, put a drop of gloss in the holes before inserting the axle mounts. Let dry overnight. Your Krazy Kar is ready to race.



Step 10